

**FECON**<sup>®</sup>  
A U S T R A L I A



**FORESTRY**

**FECON.NET.AU**



**1300 332 661**

# FORESTRY

## BULL HOG® SKID STEER / CTL

### HINGED MOTOR COVERS

- Easy service
- Access without tools

### PUSH BAR

- Pin-on
- Serrated ears direct material to better feed the mulcher

### BOLT-ON SKID SHOES

- AR400 steel
- Less plowing of material for more uniform final results



## BULL HOG® HYDRAULIC

### BODY CONSTRUCTION

- Severe duty
- Standard duty
- Durable long-lasting performance

### PUSH BAR

- Rugged fixed position
- Optional hydraulic tilting

### BOLT-ON SKID SHOES

- AR400 steel
- Adjustable for desired ground engagement
- Less plowing of material for more uniform results

### TRAP DOOR

- Helps contain debris
- Achieve finer sizing



CTL Bull Hogs	Working Width	Overall Width	Weight	Flow Range	FGT Tools	DCR Tools	FMX Tools
RK5015	1270mm	1550mm	607kg	53 - 102 lpm	N/A	N/A	22
RK6015	1524mm	1803mm	665kg	53 - 102 lpm	N/A	N/A	26
BH74SS	1550mm	1930mm	1266kg	91 - 189 lpm	30	24	N/A
BH85SS	1829mm	2210mm	1424kg	91 - 189 lpm	36	28	N/A

Hydraulic Bull Hogs	Working Width	Overall Width	Weight	Flow Range	FGT Tools	DCR Tools
RK8620	2184mm	2565mm	2177 - 2245kg	189 - 567 lpm	48	36
BH120H	2184mm	2565mm	2177 - 2245kg	189 - 567 lpm	48	36
BH230H	2540mm	2972mm	3062 - 3107kg	189 - 567 lpm	48	42
BH300H	2261mm	2767mm	3497 - 3606kg	303 - 795 lpm	48	42

## BULL HOG® EXCAVATOR

### BODY CONSTRUCTION

- 3.5 - 45+ tonne excavators
- BH40EXC, BH80EXC & BH200EXC
- Robust steel body construction
- SEVERE duty bearings
- Variable displacement

### MOUNTS

- Quick attach or pin-on
- Easily change mounts for different excavators with the bolt-on interface

### ROTOR EXPOSURE

- Cut through standing trees
- Mulch slash piles
- Grind to the surface



Model	EXC SIZE (Metric Ton)	Working Width	Overall Width	Approx Weight	Approx Flow Range	FGT Tools	DCR Tools
FMX28 *	3.5 - 8 T	711.2mm	1016mm	340kg	45 - 151 lpm	14	N/A
FMX36	5 - 13 T	914mm	1118 mm	386 kg	45 - 151 lpm	18	N/A
FMX50	5 - 13 T	1270mm	1473 mm	476 kg	45 - 151 lpm	22	N/A
CEM36	7 - 15 T	914mm	1321mm	669kg	65 - 114 lpm	18	14
BH47EXC	12 - 20 T	940mm	1270 mm	1089 kg	102 - 189 lpm	18	14
BH62EXC	12 - 20 T	1270mm	1600 mm	1202-1247 kg	102 - 189 lpm	24	20
BH40EXC	15 - 45 T	914mm	1295 mm	1429-1474 kg	114 - 284 lpm	18	14
BH80EXC	20 - 45 T	1422mm	1803 mm	1792-1950 kg	111 - 568 lpm	30	22
BH200EXC	20 - 45 T	1499mm	1956 mm	2438-2495 kg	151 - 568 lpm	30	28

\* SPECIAL ORDER MODEL

## DISC HAWK

### THICKER MATERIAL

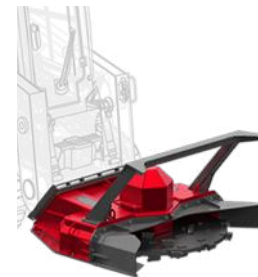
- Fell trees up to 360mm
- Wider material dispersion

### ADAPTABLE PLATFORM

- 2 push bar locations
- Variable teeth options - standard or carbide

### VARIED MULCH METHODS

- Top down or bottom up
- Back dragging
- Felling



Model	Overall Width	Working Width	Shred Diameter	Length	Weight
DH60	1956mm	1524mm	360mm+	1727mm	1225kg

**DURABILITY**  
**PERFORMANCE**  
**VERSATILITY**

# HIGH PERFORMANCE ROTORS BUILT FECON TOUGH



## FGT

Versatile smooth drum rotor system with tooling options for various application. Lacing pattern maximizes energy transfer into the material while optimizing tool wear.

### Double Carbide standard



The perfect balance of performance, wear life, and durability, the Double Carbide is the standard tool offered in FGT rotors to work in a wide range of applications.

### Viking Sword®



Double sided and easily flipped for a brand new cutting edge. Faster at cutting, resulting in a finer finished product. A tapered tool body allows chip material to flow efficiently.

### High Abrasion



Standard Double Carbide as above, plus added carbide wear plates. Extends service life in highly abrasive conditions by slowing wear.

### Stone Tool



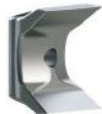
Ideal for areas where rock cannot be avoided, the FGT Stone Tool provides superior durability and wear life in more severe conditions.



## DCR

Depth Control Rotor limits tool bite which creates consistent chip sizing and less HP draw from carrier. Ideal for stringy/fibrous material or when a finer finished product is required.

### Viking Axe® standard



Double sided and easily flipped for a brand new cutting edge. The Viking Axe has a thick knife edge optimized for cutting stringy and fibrous vegetation.

### Viking Sword®



Double sided and easily flipped for a brand new cutting edge. This tool is faster at cutting, resulting in a finer finished product. A tapered tool body allows chip material to flow efficiently.



## FMX

Split ring rotor with knife tools designed to efficiently mulch while maintaining higher rotor revolutions per minute. Lightweight yet highly durable.

### Cubit Knife standard



Double sided and easily flipped for a brand new cutting edge. This tool is faster at cutting, resulting in a finer finished product. A tapered tool body allows chip material to flow efficiently.

### Cubit Carbide



Versatile tool for shredding material and improved durability. Ideal for applications that require ground engagement due to its robust and heavy duty design.

# THE BULL HOG® ADVANTAGE

## PERFORMANCE

- Variable 2 speed motor option automatically adjusts to maximise rotor speed & torque to changing material loads.
- ✓ For lighter material loads, higher RPM means more bites per second and finer material sizing.
- ✓ With heavier material the Bull Hog® delivers more rotor torque, keeping the rotor turning in demanding situations other heads may stall.
- Field tested + proven: the most productive heads available.

## DURABILITY

- Industry leading severe-duty body construction.
- Engineered and built to withstand all types of mulching conditions.
- Heavy steel materials and quality welding process provide strength and longevity.

## VERSATILITY

- Available from 50 - 600HP, Bull Hog® mulchers are designed for any machine and application.
- Available for Compact Track Loaders, Skid Steers, 5-45 tonne Excavators, PTO Tractors and more!
- With four rotor systems and a variety of tool options, can be configured for regional or specific jobsites.

# SSL / CTL / EXC

## BULL HOG MULCHERS <sup>®</sup>



- See page 2 for full range specifications.
- 8 models for excavators 5 - 45+ tonne.
- Heavy duty build quality.
- Longevity even against hard Australian timber.
- Rotor and teeth options available.
- Robust and powerful motors.

## STUMPEX <sup>®</sup>



- High torque, low RPM stump grinding bit.
- Two-speed hydraulic motor.
- Durable 3/4" AR500 steel cutting blades.
- Bore 700mm+ stumps in single pass.
- 8 - 20 tonne.
- 37 - 250 lpm skid steers / excavators.
- Compact and Standard models available.

## STUMPER



- Plug N Play design for quick and easy startup.
- Matches your machine's hydraulic capability.
- Fewer and larger cuts for faster stump removal.
- Direct drive system minimises wear and tear.
- One directional cutting and a spring design.
- Excellent visibility of the grinder from the cab.
- Face, Edge and Below Grade grinding angles.

## TREE SHEARS



- Shear, lift, bunch, and carry multiple trees.
- Cut up to 381mm material.
- Dual AR400 steel blades.
- Accumulator arm standard.
- 56 - 87 lpm skid steers / excavators.
- 7+ tonne excavators.

## ROTATING GRAPPLER



- 1520mm opening for large material.
- 360 degree rotation.
- Ideal for moving fallen trees, rocks and brush piles quickly with plug-n-go installation.
- Chrome pins and hardened steel bushing.

WATCH SKID STEER  
MULCHERS IN ACTION:



WATCH EXCAVATOR  
MULCHERS IN ACTION:



WATCH STUMP  
GRINDERS IN ACTION:



WATCH THE TREE  
SHEARS IN ACTION:

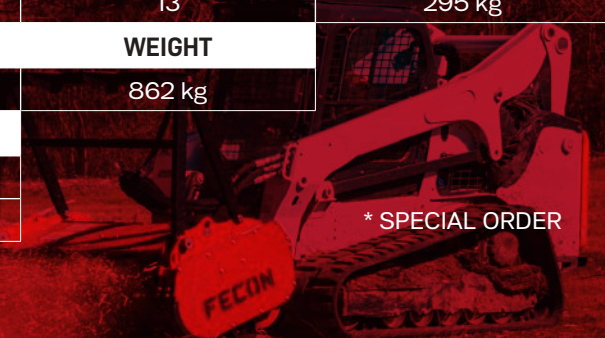


**BULL HOG MULCHERS**



BULL HOG®	FLOW RANGE (GPM)	NUMBER OF FGT TOOLS	WIDTH	WEIGHT
FOR FULL SSL / EXCAVATOR BULL HOG MULCHER RANGE SPECIFICATIONS, PLEASE REFER TO PAGE 2				
STUMPEX®	MOUNT	BIT DIAMETER	WEIGHT	FLOW RANGE (GPM)
SHX33SX	SS/CTL QA	813 mm	621 kg	78 - 159 lpm
SHX34SX *	EXC	813 mm	907 kg + mount	151 - 246 lpm
STUMPER	MAX CUT DIAMETER	FLOW RANGE (GPM)	NUMBER OF TOOLS	WEIGHT
FST280	711 mm	94 - 170+ lpm	13	295 kg
TREE SHEAR	MAX CUT DIAMETER	FLOW RANGE (GPM)	WEIGHT	
FBSD1500SS	381 mm	57 - 87 lpm	862 kg	
ROTATING GRAPPLE	WEIGHT	OPENING		
FFG60LD (light duty) *	426 kg	1524 mm		
FFG60HD (heavy duty) *	485 kg	1524 mm		

\* SPECIAL ORDER



# FORESTRY

Discover what Fecon forestry tractors can do for you and your business, delivering excellent ROI for the equipment investment.

Fecon's reputation for durability, reliability and operator support is recognised across our line of tracked carriers, from the FTX150 up to the FTX300. Fecon mulching tractors offer a versatile and efficient mix of power, control and speed, delivering supreme results and industry-leading customer satisfaction.

Our tractors are built brutally tough for even the harshest conditions, yet comfortable and and operator-friendly, to ensure you can clear the way to a job well done.



# FORESTRY TRACTOR RANGE SPECIFICATIONS

	FTX150-2	FTX200	FTX300 *
<b>GENERAL</b>			
Overall Height	2,620 mm	2,900 mm	3,175 mm
Overall Width	1,840 mm	2,080 mm	2,390 mm
Overall Width with Bullhog	2,210 mm	2,570 mm	2,570 mm
Overall Length	4,290 mm	4,850 mm	4,670 mm
Overall Length with Bullhog	5,440 mm	5,940 mm	5,890 mm
Weight	7,825 kg	9,775 kg	12,238 kg
Weight with Bullhog	9,480 kg	11,839 kg	14,557 kg
Ground Pressure with Bullhog	.33 kg/cm <sup>2</sup>	.35 kg/cm <sup>2</sup>	.29 kg/cm <sup>2</sup>
Travel Speed	6.5 km/h	8 km/h	7.2 km/h
Cab Certifications	ROPS (ISO 8082), FOPS (ISO 8083), OPS (ISO 8084)	ROPS (ISO 8082), FOPS (ISO 8083), OPS (ISO 8084)	ROPS (ISO 8082), FOPS (ISO 8083), OPS (ISO 8084)
<b>ENGINE</b>			
Make	Cummins F3.8	Cummins QSB4.5	Cummins QSB6.7
Displacement	3.8L	4.5L	6.7L
Cylinders	4	4	6
After Treatment	Tier 3 / Tier 4 Final	Tier 4 Final, Stage V	Tier 4 Final, Stage V
Max Horsepower	155HP	200HP	310HP
Max Torque	620 Nm @ 1500rpm	781 Nm @ 1500rpm	1,288 Nm @ 1500rpm
Fuel Consumption	15-19 Lph	23-27 Lph	27-34 Lph
Fuel Tank Capacity	170 Litres	295 Litres	379 Litres
DEF Consumption	1.1-1.5 Lph	1.5-1.9 Lph	1.5-1.9 Lph
DEF Tank Capacity	19 Litres	38 Litres	57 Litres
Electrical System	12V	12V	24V
Battery	Dual 12V	Dual 12V	Dual 24V
Slope Rating	40° All Directions	45° Fore/Aft, 40° Side Slope	50° fore/aft, 43° side/side
<b>UNDERCARRIAGE</b>			
Class	D3	D3	D4
Manufacturer	ITR	ITR	Berco
Track Width	508 mm	610 mm	760 mm
Standard Grouser	Single	Single	Single
Rollers	2 top / 7 bottom	2 top / 9 bottom	2 top / 9 bottom
Ground Clearance	533 mm	457 mm	584 mm
<b>HYDRAULICS</b>			
Mulcher Circuit	227 Lpm @ 345 Bar	303 Lpm @ 345 Bar	435 Lpm @ 372 Bar
Hydraulic Tank Capacity	208 Liters	227 Liters	186 Liters
<b>ATTACHMENTS</b>			
Standard Attachment	BH85SD Bullhog	RK8620 Bullhog	RK8620 Bullhog
Mounting Style	Pin-On	Pin-On	Pin-On
Lift Style	Loader Arms	Radial Lift Gear	Radial Lift Gear
Max Reach with Bullhog	3,480 mm to Bottom of Rotor	1,245mm	1,397mm
Max Below Grade with Bullhog	813 mm	787mm	813mm

\* SPECIAL ORDER

FOR IMAGES, VIDEOS & FURTHER INFORMATION, VISIT [FECON.NET.AU](http://FECON.NET.AU)

**FECON**<sup>®</sup>  
A U S T R A L I A

**MAKE IT  
HAPPEN**



# JOIN THE FECON FAMILY

[sales@fecon.net.au](mailto:sales@fecon.net.au)

1300 332 661

[fecon.net.au](http://fecon.net.au)

1300 FECON 1

Whether you are buying, renting, or servicing your forestry equipment, Fecon Australia has solutions that focus on your success.

Operator-driven design with a global network of expertise that is woven into every product.

FIND US ON



- Certain guarding and features may have been removed for illustrative purposes.
- ALWAYS RUN WITH PROPER GUARDING IN PLACE.
- Weights may vary based on optional extras and variable inclusions.
- Specifications are approximate and subject to change without notice.
- Photographs may have been altered for marketing purposes.
- SAFETY IS THE RESPONSIBILITY OF THE OPERATOR.
- Always ensure your carrier's safety features, including ROPs & FOPs, meet your job safety requirements.
- Images of machines and attachments in this brochure may contain optional accessories.

