

FECON[®]
A U S T R A L I A



FORESTRY

FECON.NET.AU



1300 332 661

FORESTRY



BULL HOG® SKID STEER / CTL

HINGED MOTOR COVERS

- Easy service
- Access without tools

PUSH BAR

- Pin-on
- Serrated ears direct material to better feed the mulcher

BOLT-ON SKID SHOES

- AR400 steel
- Less plowing of material for more uniform final results



BULL HOG® HYDRAULIC

BODY CONSTRUCTION

- Severe duty
- Standard duty
- Durable long-lasting performance

BOLT-ON SKID SHOES

- AR400 steel
- Adjustable for desired ground engagement
- Less plowing of material for more uniform results

PUSH BAR

- Rugged fixed position
- Optional hydraulic tilting

TRAP DOOR

- Helps contain debris
- Achieve finer sizing

| CTL Bull Hogs | Working Width | Overall Width | Weight | Flow Range | FGT Tools | DCR Tools | FMX Tools |
|---------------|---------------|---------------|--------|--------------|-----------|-----------|-----------|
| RK5015 | 1270mm | 1550mm | 607kg | 53 - 102 lpm | N/A | N/A | 22 |
| RK6015 | 1524mm | 1803mm | 665kg | 53 - 102 lpm | N/A | N/A | 26 |
| BH74SS | 1550mm | 1930mm | 1266kg | 91 - 189 lpm | 30 | 24 | N/A |
| BH85SS | 1829mm | 2210mm | 1424kg | 91 - 189 lpm | 36 | 28 | N/A |

| Hydraulic Bull Hogs | Working Width | Overall Width | Weight | Flow Range | FGT Tools | DCR Tools |
|---------------------|---------------|---------------|---------------|---------------|-----------|-----------|
| RK8620 | 2184mm | 2565mm | 2177 - 2245kg | 189 - 567 lpm | 48 | 36 |
| BH120H | 2184mm | 2565mm | 2177 - 2245kg | 189 - 567 lpm | 48 | 36 |
| BH230H | 2540mm | 2972mm | 3062 - 3107kg | 189 - 567 lpm | 48 | 42 |
| BH300H | 2261mm | 2767mm | 3497 - 3606kg | 303 - 795 lpm | 48 | 42 |



BULL HOG® EXCAVATOR

BODY CONSTRUCTION

- 3.5 - 45+ tonne excavators
- BH40EXC, BH80EXC & BH200EXC
- Robust steel body construction
- SEVERE duty bearings
- Variable displacement

MOUNTS

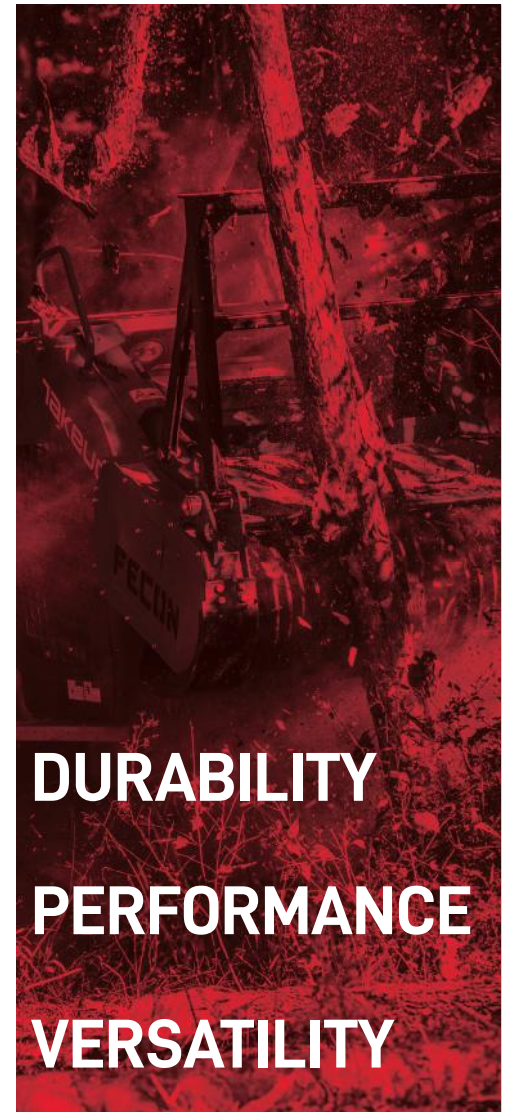
- Quick attach or pin-on
- Easily change mounts for different excavators with the bolt-on interface

ROTOR EXPOSURE

- Cut through standing trees
- Mulch slash piles
- Grind to the surface

| Model | EXC SIZE (Metric Ton) | Working Width | Overall Width | Approx Weight | Approx Flow Range | FGT Tools | DCR Tools |
|----------|-----------------------|---------------|---------------|---------------|-------------------|-----------|-----------|
| FMX28 * | 3.5 - 8 T | 711.2mm | 1016mm | 340kg | 45 - 151 lpm | 14 | N/A |
| FMX36 | 5 - 13 T | 914mm | 1118 mm | 386 kg | 45 - 151 lpm | 18 | N/A |
| FMX50 | 5 - 13 T | 1270mm | 1473 mm | 476 kg | 45 - 151 lpm | 22 | N/A |
| CEM36 | 7 - 15 T | 914mm | 1321mm | 669kg | 65 - 114 lpm | 18 | 14 |
| BH47EXC | 12 - 20 T | 940mm | 1270 mm | 1089 kg | 102 - 189 lpm | 18 | 14 |
| BH62EXC | 12 - 20 T | 1270mm | 1600 mm | 1202-1247 kg | 102 - 189 lpm | 24 | 20 |
| BH40EXC | 15 - 45 T | 914mm | 1295 mm | 1429-1474 kg | 114 - 284 lpm | 18 | 14 |
| BH80EXC | 20 - 45 T | 1422mm | 1803 mm | 1792-1950 kg | 111 - 568 lpm | 30 | 22 |
| BH200EXC | 20 - 45 T | 1499mm | 1956 mm | 2438-2495 kg | 151 - 568 lpm | 30 | 28 |

* SPECIAL ORDER MODEL



DURABILITY
PERFORMANCE
VERSATILITY



HIGH PERFORMANCE ROTORS BUILT FECON TOUGH



FGT

Versatile smooth drum rotor system with tooling options for various application. Lacing pattern maximizes energy transfer into the material while optimizing tool wear.

Double Carbide standard



The perfect balance of performance, wear life, and durability, the Double Carbide is the standard tool offered in FGT rotors to work in a wide range of applications.

Viking Sword®



Double sided and easily flipped for a brand new cutting edge. Faster at cutting, resulting in a finer finished product. A tapered tool body allows chip material to flow efficiently.

High Abrasion



Standard Double Carbide as above, plus added carbide wear plates. Extends service life in highly abrasive conditions by slowing wear.

Stone Tool



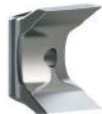
Ideal for areas where rock cannot be avoided, the FGT Stone Tool provides superior durability and wear life in more severe conditions.



DCR

Depth Control Rotor limits tool bite which creates consistent chip sizing and less HP draw from carrier. Ideal for stringy/fibrous material or when a finer finished product is required.

Viking Axe® standard



Double sided and easily flipped for a brand new cutting edge. The Viking Axe has a thick knife edge optimized for cutting stringy and fibrous vegetation.

Viking Sword®



Double sided and easily flipped for a brand new cutting edge. This tool is faster at cutting, resulting in a finer finished product. A tapered tool body allows chip material to flow efficiently.



FMX

Split ring rotor with knife tools designed to efficiently mulch while maintaining higher rotor revolutions per minute. Lightweight yet highly durable.

Cubit Knife standard



Double sided and easily flipped for a brand new cutting edge. This tool is faster at cutting, resulting in a finer finished product. A tapered tool body allows chip material to flow efficiently.

Cubit Carbide



Versatile tool for shredding material and improved durability. Ideal for applications that require ground engagement due to its robust and heavy duty design.

THE BULL HOG® ADVANTAGE

PERFORMANCE

- Variable 2 speed motor option automatically adjusts to maximise rotor speed & torque to changing material loads.
- ✓ For lighter material loads, higher RPM means more bites per second and finer material sizing.
- ✓ With heavier material the Bull Hog® delivers more rotor torque, keeping the rotor turning in demanding situations other heads may stall.
- Field tested + proven: the most productive heads available.

DURABILITY

- Industry leading severe-duty body construction.
- Engineered and built to withstand all types of mulching conditions.
- Heavy steel materials and quality welding process provide strength and longevity.

VERSATILITY

- Available from 50 - 600HP, Bull Hog® mulchers are designed for any machine and application.
- Available for Compact Track Loaders, Skid Steers, 5-45 tonne Excavators, PTO Tractors and more!
- With four rotor systems and a variety of tool options, can be configured for regional or specific jobsites.

SSL / CTL / EXC

BULL HOG MULCHERS®



- See page 2 for full range specifications.
- 8 models for excavators 5 - 45+ tonne.
- Heavy duty build quality.
- Longevity even against hard Australian timber.
- Rotor and teeth options available.
- Robust and powerful motors.

STUMPEX®



- High torque, low RPM stump grinding bit.
- Two-speed hydraulic motor.
- Durable 3/4" AR500 steel cutting blades.
- Bore 700mm+ stumps in single pass.
- 8 - 20 tonne.
- 37 - 250 lpm skid steers / excavators.
- Compact and Standard models available.

TREE SHEARS



- Shear, lift, bunch, and carry multiple trees.
- Cut up to 381mm material.
- Dual AR400 steel blades.
- Accumulator arm standard.
- 56 - 87 lpm skid steers / excavators.
- 7+ tonne excavators.

STUMP HOGS



- Extend your reach, for those stumps that cannot be safely accessed with a traditional stump grinder.
- High speed 914mm grinding wheel with 15 carbide tools.
- Contains debris for safety.
- Full view of stump/disk during operation.
- 3 models available 151-454 lpm.
- Excavator models in stock, SSL special order.

ROTATING GRAPPLERS



- 1520mm opening for large material.
- 360 degree rotation.
- Ideal for moving fallen trees, rocks and brush piles quickly with plug-n-go installation.
- Chrome pins and hardened steel bushing.

WATCH SKID STEER
MULCHERS IN ACTION:



WATCH EXCAVATOR
MULCHERS IN ACTION:



WATCH THE STUMPEX
IN ACTION:



WATCH THE TREE
SHEARS IN ACTION:



BULL HOG MULCHERS



| BULL HOG® | FLOW RANGE (GPM) | NUMBER OF FGT TOOLS | WIDTH | WEIGHT |
|--|------------------|---------------------|-----------------|------------------|
| FOR FULL SSL / EXCAVATOR BULL HOG MULCHER RANGE SPECIFICATIONS, PLEASE REFER TO PAGE 2 | | | | |
| STUMPEX® | MOUNT | BIT DIAMETER | WEIGHT | FLOW RANGE (GPM) |
| SHX33SX | SS/CTL QA | 813 mm | 621 kg | 78 - 159 lpm |
| SHX34SX | EXC | 813 mm | 907 kg + mount | 151 - 246 lpm |
| STUMP HOG® | WHEEL DIAMETER | FLOW RANGE (GPM) | NUMBER OF TOOLS | WEIGHT |
| SH270 SS | 635 mm | 113 - 189 lpm | 24 | 771 kg |
| TREE SHEAR | MAX DIAMETER | FLOW RANGE (GPM) | WEIGHT | |
| FBSD1500SS | 381 mm | 57 - 87 lpm | 862 kg | |
| ROTATING GRAPPLE | WEIGHT | OPENING | | |
| FFG60LD (light duty) * | 426 kg | 1524 mm | | |
| FFG60HD (heavy duty) * | 485 kg | 1524 mm | | |

* SPECIAL ORDER

FORESTRY

Discover what Fecon forestry tractors can do for you and your business, delivering excellent ROI for the equipment investment.

Fecon's reputation for durability, reliability and operator support is recognised across our line of tracked carriers, from the FTX150 up to the FTX300. Fecon mulching tractors offer a versatile and efficient mix of power, control and speed, delivering supreme results and industry-leading customer satisfaction.

Our tractors are built brutally tough for even the harshest conditions, yet comfortable and and operator-friendly, to ensure you can clear the way to a job well done.



WATCH MULCHING TRACTORS IN ACTION:



FORESTRY TRACTOR RANGE SPECIFICATIONS

| | FTX150-2 | FTX200 * | FTX300 * |
|------------------------------|--|--|--|
| GENERAL | | | |
| Overall Height | 2,620 mm | 2,900 mm | 3,175 mm |
| Overall Width | 1,840 mm | 2,080 mm | 2,390 mm |
| Overall Width with Bullhog | 2,210 mm | 2,570 mm | 2,570 mm |
| Overall Length | 4,290 mm | 4,850 mm | 4,670 mm |
| Overall Length with Bullhog | 5,440 mm | 5,940 mm | 5,890 mm |
| Weight | 7,825 kg | 9,775 kg | 12,238 kg |
| Weight with Bullhog | 9,480 kg | 11,839 kg | 14,557 kg |
| Ground Pressure with Bullhog | .33 kg/cm ² | .35 kg/cm ² | .29 kg/cm ² |
| Travel Speed | 6.5 km/h | 8 km/h | 7.2 km/h |
| Cab Certifications | ROPS (ISO 8082), FOPS (ISO 8083), OPS (ISO 8084) | ROPS (ISO 8082), FOPS (ISO 8083), OPS (ISO 8084) | ROPS (ISO 8082), FOPS (ISO 8083), OPS (ISO 8084) |
| ENGINE | | | |
| Make | Cummins F3.8 | Cummins QSB4.5 | Cummins QSB6.7 |
| Displacement | 3.8L | 4.5L | 6.7L |
| Cylinders | 4 | 4 | 6 |
| After Treatment | Tier 3 / Tier 4 Final | Tier 4 Final, Stage V | Tier 4 Final, Stage V |
| Max Horsepower | 155HP | 200HP | 310HP |
| Max Torque | 620 Nm @ 1500rpm | 781 Nm @ 1500rpm | 1,288 Nm @ 1500rpm |
| Fuel Consumption | 15-19 Lph | 23-27 Lph | 27-34 Lph |
| Fuel Tank Capacity | 170 Litres | 295 Litres | 379 Litres |
| DEF Consumption | 1.1-1.5 Lph | 1.5-1.9 Lph | 1.5-1.9 Lph |
| DEF Tank Capacity | 19 Litres | 38 Litres | 57 Litres |
| Electrical System | 12V | 12V | 24V |
| Battery | Dual 12V | Dual 12V | Dual 24V |
| Slope Rating | 40° All Directions | 45° Fore/Aft, 40° Side Slope | 50° fore/aft, 43° side/side |
| UNDERCARRIAGE | | | |
| Class | D3 | D3 | D4 |
| Manufacturer | ITR | ITR | Berco |
| Track Width | 508 mm | 610 mm | 760 mm |
| Standard Grouser | Single | Single | Single |
| Rollers | 2 top / 7 bottom | 2 top / 9 bottom | 2 top / 9 bottom |
| Ground Clearance | 533 mm | 457 mm | 584 mm |
| HYDRAULICS | | | |
| Mulcher Circuit | 227 Lpm @ 345 Bar | 303 Lpm @ 345 Bar | 435 Lpm @ 372 Bar |
| Hydraulic Tank Capacity | 208 Liters | 227 Liters | 186 Liters |
| ATTACHMENTS | | | |
| Standard Attachment | BH85SD Bullhog | RK8620 Bullhog | RK8620 Bullhog |
| Mounting Style | Pin-On | Pin-On | Pin-On |
| Lift Style | Loader Arms | Radial Lift Gear | Radial Lift Gear |
| Max Reach with Bullhog | 3,480 mm to Bottom of Rotor | 1,245mm | 1,397mm |
| Max Below Grade with Bullhog | 813 mm | 787mm | 813mm |

* SPECIAL ORDER

FOR IMAGES, VIDEOS & FURTHER INFORMATION, VISIT FECON.NET.AU

FECON[®]
A U S T R A L I A

**MAKE IT
HAPPEN**



JOIN THE FECON FAMILY

sales@fecon.net.au

1300 332 661

fecon.net.au

1300 FECON 1

Whether you are buying, renting, or servicing your forestry equipment, Fecon Australia has solutions that focus on your success. Operator-driven design with a global network of expertise that is woven into every product.

FIND US ON    

- Certain guarding and features may have been removed for illustrative purposes.
- ALWAYS RUN WITH PROPER GUARDING IN PLACE.
- Weights may vary based on optional extras and variable inclusions.
- Specifications are approximate and subject to change without notice.
- Photographs may have been altered for marketing purposes.
- SAFETY IS THE RESPONSIBILITY OF THE OPERATOR.
- Always ensure your carrier's safety features, including ROPs & FOPs, meet your job safety requirements.
- Images of machines and attachments in this brochure may contain optional accessories.

