

asv

SALES & SERVICE



1300 837 391



asvaus.com

CONSTRUCTION EQUIPMENT SPECIALISTS

**YOU'VE GOT A JOB TO DO. YOU NEED RESULTS...
WE'RE HERE TO HELP.**

ASV Sales & Service is one of Australia's premier construction equipment suppliers.

From the industry-leading range of ASV Posi-Track™ Compact Track Loaders, to skid steers, excavators, telehandlers, wheel loaders, forestry equipment and much more, ASV Sales & Service has the products, and the support, to keep you working on any job site.



EQUIPMENT SALES

At ASV Sales & Service, we know construction equipment. You can count on our dedicated and knowledgeable team of product experts to take the time to understand and satisfy your equipment needs by recommending the right solution for the job.

If you're looking for a high quality machine you can rely on to get the job done, trust ASV Sales & Service.



RENTALS

When you want a high-performance machine with reliability that you can trust, but you need the flexibility of hiring, ASV Sales & Service has you covered.

Our fleet is diverse, offering a machine to suit virtually any requirement.



Furthermore, because our rental fleet is maintained by factory-trained technicians, you can be confident that you'll not only be getting the best gear on the market, but that it's also going to work as hard as you do.

We look after all our machines to ensure maximum performance, reliability and value.

SERVICE & SUPPORT

We're in business to help keep you and your machine working effectively and efficiently.

With a leading over-the-counter fill rate on spare parts, you can be sure that when you buy a machine from ASV Sales & Service, you'll be looked after throughout the machine's entire lifetime.



Every service job is as important to us as it is to you.

With a dedicated team of construction equipment technicians, we have ample resources to look after any of your machine repairs or servicing requirements quickly and efficiently.

We aim to minimise your downtime and maximise your income.

CONSTRUCTION EQUIPMENT SPECIALISTS

PRODUCT RANGE:

ASV COMPACT TRACK LOADERS

- ASV Posi-Track™ 25hp - 132hp range

JCB CONSTRUCTION EQUIPMENT

- Mini / Large Excavators 0.8t - 40t
- Backhoe Loaders 49 - 109hp
- Telehandlers 4m - 20m
- Wheel Loaders 2 - 24t
- Compact Track / Skid Steer Loaders
- Fastrac Tractors 230 - 350hp
- Compaction Rollers 1t - 14t



XCMG CONSTRUCTION EQUIPMENT

- Mini / Large Excavators 1.7 - 49t
- Wheel Loaders 10 - 30t
- Road Graders & Rollers
- Access Equipment / EWP's 5m - 21m

FECO VEGETATION MANAGEMENT

- Forestry Tractors 150hp - 600hp
- Mulcher Attachments for SSL / EXC
- Tree Shears for SSL / EXC
- Stumpex® Stump Grinders for SSL / EXC
- Industrial Brushcutters for SSL

USED MACHINES

- Track Loaders
- Skid Steers
- Site Dumpers
- Mini Excavators
- Large Excavators
- Forestry Equipment

ATTACHMENTS

- RodRadar LDR
- Various Buckets
- Auger Drives
- Trenchers
- Forestry
- Bucket Brooms
- Dozer Blades
- Rotary Tillers
- Pallet Forks
- Road Wideners



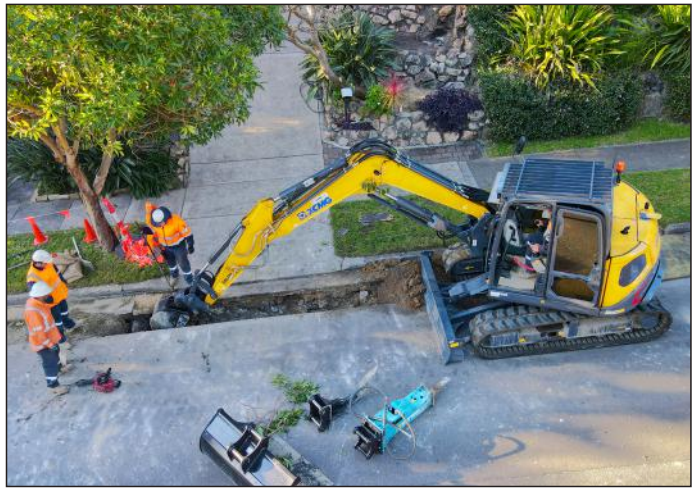


NEED A MACHINE THAT CONFORMS TO CURRENT WHS OR MINING REGULATIONS? WE CAN HELP.

We understand that local WHS requirements can change from site to site, however you can be confident that a machine delivered by ASV Sales & Service will fully-comply with your health and safety needs.

In addition, our team of expert service technicians can tailor any of our machines to meet all regional and mine specification requirements.

Plus, many of our rental machines have basic mine kits already installed, so if you need to get to work in the mines, we've got the machine for you ready to go!




NATIONAL HOTLINE
1300 837 391



COMPACT TRACK LOADERS

THE HOME OF ASV POSI-TRACK™ IN AUSTRALIA.

Efficient. Comfortable. Durable. That's the Posi-Track™ difference.

With exceptional versatility, the Compact Track Loader is at home in a multitude of applications; including landscaping, ground preparation, forestry, residential, home building, forestry, land clearing and road maintenance.

What this means for you:

- The industry's original Posi-Track™ suspension undercarriage delivers unmatched traction, stability and ride comfort, while eliminating damaging shock loads and improving machine component life.
- Specially-developed heavy duty rubber crawler tracks provide go-anywhere performance and unmatched durability.
- Multi-level suspension system provides excellent ground contact and a smooth ride at high travel speeds and/or on uneven terrain, resulting in greater operator comfort and increased productivity.
- Best-in-class ground clearance for excellent off-road ability.
- Choice of cab: open / air conditioned / MAX-Series (selected models below).
- Customise your machine and its attachments to suit your needs.

Operational Specifications - CTL Range

MODEL	ENGINE POWER (HP/KW)	GROUND PRESSURE (PSI/KPA)	HYD. FLOW (LPM)	OP. WEIGHT (KG)	TIPPING LOAD (KG)	MAX CAB
RT-25	24.7 18.4	3.1 21.4	42.8	1703	862	N/A
RT-40	37.5 29.7	3.5 24.1	50.35	1894	1206	N/A
RT-50	49.6 37	3.1 21.3	50.35	2427	1814	N/A
RT-60	60 44.7	3.7 25.5	61.7	2957	2072	N/A
RT-65	67 50	4.3 29.7	84 / 103.7	3393	2495	YES
VT-70 <small>HIGH BUT</small>	74.3 55.4	4.6 31.7	105.6	3465	3030	YES
RT-75	74 55	3.6 24.8	135	4110	3564	YES
RT-75 <small>HEAVY</small>	74 55	3.6 24.8	135	4178	3629	YES
VT-100	103.5 77.2	4 27.2	87 151.4	4842	4536	YES
VT-100 <small>FORESTRY</small>	103.5 77.2	4 27.6	87 151.4	5160	4795	YES
RT-135	132 98.4	4.7 32.4	189	5477	4536	YES
RT-135 <small>FORESTRY</small>	132 98.4	4.6 31.7	189	5892	4853	YES



WHAT MAKES POSI-TRACK™ SO SPECIAL?

ASV pioneered the Compact Track Loader industry, and has been perfecting its legendary Posi-Track undercarriage for more than 30 years. Experience improved traction and flotation, unmatched ride comfort, and superior durability compared to other CTLs.

- An open-rail, suspension-type undercarriage, using industrial-strength rubber components = minimal wear and tear.
- Track drive system uses elevated roller sprockets with replaceable hardened steel sleeves, and a low friction drive between track lugs and sleeves = minimal impact on tracks and greater longevity of all components.
- Two torsion axles between the undercarriage and chassis deliver unmatched suspension and operator comfort.
- A higher ground clearance means you can work more productively in a wider range of ground conditions.

...*There's only one Posi-Track™*



RT-75
HEAVY DUTY
MAX-SERIES



VT-100
MAX-SERIES



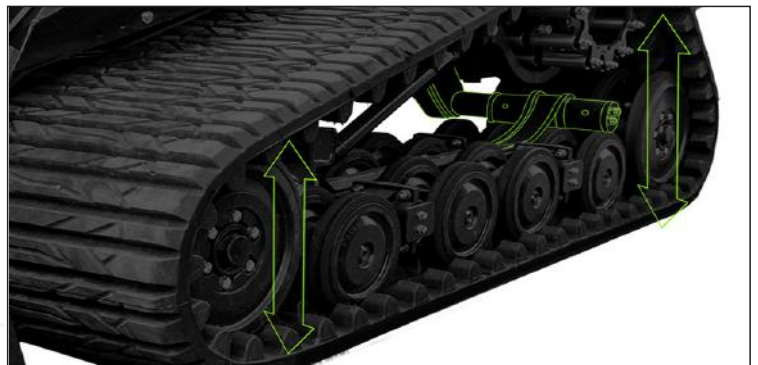
VT-100
FORESTRY
MAX-SERIES



RT-135
MAX-SERIES



RT-135
FORESTRY
MAX-SERIES





AGRI & CONSTRUCTION

WORLD-RENOWNED FOR EXCELLENCE.

Quality and durability engineered into every machine; that's the JCB promise.

JCB's range of world-class machinery includes backhoe loaders, hydraulic excavators, mini excavators, skid steers, compact track loaders, telehandlers, Fastrac tractors, rough terrain forklifts and wheel loaders.

JCB equipment is utilised across many industries in every corner of the world, including construction, agriculture, civil works, defence, rental, government, mining, recycling and waste management.

What this means for you:

- Choose from a wide range of world-renowned construction, earthmoving and materials handling machines.
- Receive the operational, sales, service, parts and rentals support that JCB together with the ASV Sales & Service network can deliver.
- Throughout JCB's history, they have always invested heavily in research and development, keeping JCB at the cutting edge of innovation.
- Excellent value finance offers help you make the smart choice to invest in a JCB without being hurt by high interest rates.

Operational Specs - Smallest to Largest Machine / Category

MACHINE TYPE	MODELS AVAILABLE	SMALLEST SIZE	LARGEST SIZE
Mini / Large Excavators	20+	0.9 T	37 T
Backhoe Loaders	5	36kW / 49HP	74kW / 100HP
Wheel Loaders	15	26kW / 36HP	239kW / 320HP
Telehandlers	20	4m Max Lift	20m Max Lift
Fastrac Tractors	2	175kW / 234HP	260kW / 348HP
Generators	6+	8kVA	1,250kVA
SSL / CTL	8 / 6	36kW / 48HP	68kW / 92HP
Forklifts	4	4.4m Max Lift	6.7m Max Lift
Wheeled Excavators	2	81kW / 108HP	93kW / 124HP
Compaction Rollers	4	1710 kg	13200 kg

MINI EXCAVATORS



BACKHOES



TELEHANDLERS



LARGE EXCAVATORS



HUNTER JCB

GENERATORS



SSL / CTL



TRACTORS



WHEEL LOADERS



FORKLIFTS





MINING & CONSTRUCTION

THIRD LARGEST MANUFACTURER GLOBALLY.

Founded in 1943, XCMG is one of the world's largest manufacturers of construction and mining equipment, with 8 decades of experience.

Possessing a multitude of manufacturing and engineering facilities around the world - including in USA, Germany, China, Brazil and India - XCMG machines possess global-leading innovation and technology at the heart of their design.

In Australia, XCMG possesses an extensive supply chain and dealer network throughout Australia, and existing relationships with corporate giants including Rio Tinto, BHP and MMG.

XCMG's comprehensive catalogue of premium machines includes hydraulic excavators, mini excavators, wheel loaders, road graders, vibratory compaction rollers and access equipment (elevating work platforms).

XCMG machinery is utilised across many industries worldwide, most notably construction, mining, quarries, agriculture, civil works, defence, rental, government, recycling and waste management.

What this means for you:

- Choose from a diverse range of world renowned mining, construction and earthmoving machines designed for maximum performance, durability, reliability and operator comfort.
- Receive the operational, sales, service, parts and rentals support that XCMG together with the ASV Sales & Service network can deliver.
- Experience the unique performance and quality of XCMG, one of the industry's best value-for-money machinery brands and a growing powerhouse in the Australian mining and construction industries.
- Excellent value finance offers help you make the smart choice to invest in an XCMG without being hurt by high interest rates.

Operational Specs - Smallest to Largest Machine / Category

MACHINE TYPE	MODELS AVAILABLE	SMALLEST SIZE	LARGEST SIZE
Mini / Large Excavators	12	1.7 T	49 T
Road Graders	3	10 T	20 T
Wheel Loaders	7	10 T	30 T
Vibratory Rollers	8	2 T	26 T
Access Equipment	5	5 M	21 M



MINI / LARGE EXCAVATORS



WHEEL LOADERS



ROLLERS



GRADERS



ACCESS





FECON FORESTRY

LET'S GET SOMETHING CLEAR...

For more than 20 years, Fecon has built a reputation of designing, engineering and manufacturing some of the most durable forestry and vegetation management attachments in the world.

Fecon's no-compromise approach extends into each of their product lines. When you experience the Fecon difference, you'll know it.

Fecon, in partnership with ASV Sales & Service, equips customers Australia-wide with heavy duty equipment and industry-leading after sales support. By providing the highest value products and superior service, Fecon and ASV Sales & Service together forge lasting relationships with every customer.

While Fecon is proud to be known and recognised for the world famous Bull Hog - the industry-leading forestry mulching head - the story doesn't stop there. Fecon manufactures a broad line of durable, purpose-built products spanning an impressive range of forestry and vegetation management applications.

Product Range Overview - Fecon Forestry Equipment

FTX Forestry Tractors: Fecon's reputation for durability, reliability, versatility and operator support is recognised across our line of tracked carriers, from the FTX150-2, up to the FTX600.

Offering a versatile and efficient mix of power, control and speed.

Bull Hog Mulchers: Attached to almost any excavator, skid steer or track loader, Bull Hog forestry mulchers are perfect for clearing dense trees and brush along roadsides, ravines, creeks, and riverbanks with an unmatched final mulch quality.

Stump Grinders: Fecon offers Stumpex stump grinders to suit skid steers, posi-tracks and excavators. The Stumpex utilises a low RPM functionality that provides safer and more efficient operation than many alternative stumpers.

Tree Shears: Able to be mounted on excavators, skid steers and tracked loaders, Fecon Tree Shears require only as little as 75 LPM of low flow hydraulics to process even the toughest timber found throughout Australia. Ideal for reaching up and down slopes and areas that are otherwise inaccessible.



MACHINE TYPE	MODELS AVAILABLE	SMALLEST SIZE	LARGEST SIZE
Forestry Tractors	3	150 HP	600 HP
Skid Steer Mulchers	8	590 kg	3.6 T
Excavator Mulchers	9	340 kg	2.4 T
Tree Shears	1	862 kg	-
Stump Grinders	3	621 kg	907 kg





ATTACHMENTS

BEST BRANDS. LOWEST PRICES. FRIENDLY SERVICE.

In addition to our extensive range of construction machines, ASV Sales & Service offers the best attachments for your Posi-Track, skid steer, excavator, loader, backhoe, tractor or other hydraulic machine.

Our range includes many types of excavator and CTL / SSL buckets, rippers, dozer blades, tilt and quick hitches, brooms, road wideners and profilers, pallet forks, ramps, brushcutters, mulchers, tree shears, stump grinders, road profilers and stabilisers, asphalt laying belt attachments, and so many more.

Product Range Overview - Attachments

ASV Sales & Service are official dealers / resellers / distributors for the following brands of attachments, and can offer most attachments to you as either standalone products, or as part of packages with your next new or used machine purchase:



Fecon are world-renowned for producing the toughest, most durable and remarkably affordable vegetation management attachments, including mulchers, tree shears, stump grinders and compact forestry tractors.



RodRadar Live Dig Radar (LDR) ground scanning excavator bucket with patented radar imaging technology, which enables automatic, real-time, on-site alerts for the prevention of damage to underground utility infrastructure during excavation.



Norm Engineering offers a diverse range of attachments for excavators, skid steers and Posi-Tracks, including but not limited to buckets, rippers, angle / tilt dozer blades, forks, and tilt hitch attachments.



Digga offers a wide variety of earthmoving equipment attachments, including but not limited to auger drives, slashers, rotary hoes, trenchers, buckets, bucket brooms, and pallet forks.



Davco industrial strength rotary Brush Cutters are designed, engineered and built to be the leader in industrial strength and quality, achieving low operating cost and minimal maintenance.



Schibeci is an Australian manufacturer of high quality road milling and profiling equipment, including the best-in-class ST1000 attachment for use with skid steers and compact track loaders.





SERVICE, PARTS & SUPPORT

ASV SALES & SERVICE PROVIDES THE BEST PARTS AND SERVICE SUPPORT IN THE BUSINESS.

Trust ASV Sales & Service's factory trained expert parts and service technicians to get the most out of your machine.

We offer full maintenance, parts and service – with complete field service capability at each of our locations, our team of fully-qualified plant and diesel mechanics provide service on any make or model of earthmoving equipment.

Rest assured, when you buy a machine from ASV Sales & Service, we have the resources to back it up!



GENUINE FACTORY PARTS HELP YOU GET THE MOST FROM YOUR EQUIPMENT INVESTMENT.

As an authorised factory distributor for ASV Posi-Track Compact Track Loaders, Fecon vegetation management equipment, JCB construction and mining equipment, XCMG machinery and many other brands, we have the most comprehensive over-the-counter and distributed supply of factory spares in the industry.

Our warehouse consistently maintains the industry's most impressive and comprehensive supply of parts, and we are proud to provide an exceptional fill rate on spares over the counter. That means that whether it's a bolt, filter, track or an engine, we are likely to have it in stock.

Why take a chance with aftermarket parts? Genuine ASV, JCB, XCMG, Fecon, Road Widener, Schibeci, Davco and many more factory-supplied parts are specifically engineered to help you get the most out of your machine for minimal expense.

We also stock and/or can order in many parts for other brands of machinery and attachments. So if you're looking for a genuine replacement part for your machine, we've got you covered.

With daily express trucks running between our primary and satellite locations throughout Australia, you can be confident that you'll receive the best aftermarket service and support in the industry.

Put simply: we won't let you down.




NATIONAL PARTS, SERVICE & SUPPORT HOTLINE
1300 837 391





NEWCASTLE

21 Gallegan Street, Hexham NSW 2322

BRISBANE

999 Beaudesert Road, Archerfield QLD 4108

SUNSHINE COAST

7071 Bruce Highway, Chevallum QLD 4555

PERTH

15 Kewdale Road, Welshpool WA 6106



@asvaus